

# NAV-TV

INTERFACING THE FUTURE

3950 NW 120<sup>th</sup> Ave, Coral Springs, FL 33065 TEL 561-955-9770 FAX 561-955-9760  
[www.nav-tv.com](http://www.nav-tv.com) [info@nav-tv.com](mailto:info@nav-tv.com)

BHM  
04/30/14  
NTV-DOC058

## TOOKI-MB

NTV-KIT043/112/288



### Overview

The TOOKI-MB adds hands free calling to the factory MOST fiber optic system in select Mercedes vehicles. ***If this Mercedes is equipped with MBRACE, this module is NOT compatible!***

### Kit Contents



Power Harness  
NTV-ASY007



TOOKI Module  
NTV-ASY022



Fiber Harness  
NTV-ASY003



TOOKI MIC  
NTV-MIC024



2x Fiber Coupler  
NTV-CON001

Agreement: End user agrees to use this product in compliance with all State and Federal laws. NAV-TV Corp. would not be held liable for misuse of its product. If you do not agree, please discontinue use immediately and return product to place of purchase. This product is intended for off-road use and passenger entertainment only.

## Installation

1. Remove the factory radio, disconnect all harnesses and set it aside.
2. From the provided **Power Harness**, connect the **black wire** to **Ground (-)**. A ground wire can be found in the main power plug.
3. From the provided **Power Harness**, connect the **yellow wire** to **Constant 12v (+)**. A constant wire can be found in the main power plug.

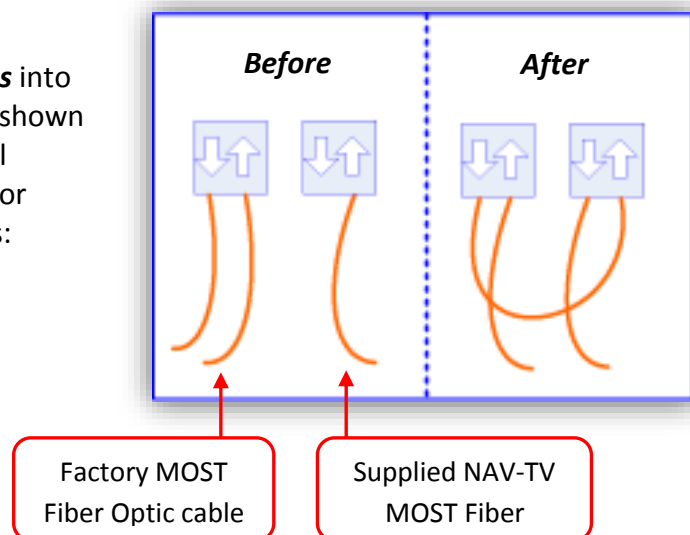


4. Run the provided **TOOKI MIC** from the desired location to the MIC port on the TOOKI module. The best location for mounting the microphone is generally above the rearview mirror or the A-pillar.



**\*Note: the factory MB microphone cannot be used with the TOOKI.**

5. Connect the provided **Fiber Harness** into the factory MOST fiber system like shown in the diagram here (right). This will require removing the fiber connector from the main radio power harness:



6. Reconnect one of the fiber pairs to the radio, connect the last free fiber pair to the TOOKI module at the fiber port.
7. Connect the **Power Harness** to the power port on the TOOKI module.

8. **If this vehicle is equipped with a phone module and/or an SOS module, its fiber leads must be bypassed with the provided Fiber coupler. Remove the fiber leads from the (factory) fiber connector, and insert each end into one end of the coupler. Secure the leads by closing the coupler. See next section 'Factory Phone Verification' for qualifying this vehicle.**



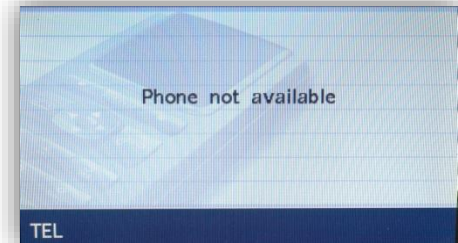
### Factory Phone Verification

- If this Mercedes is equipped with a factory phone module, it must be removed. The module is usually located towards the front of the trunk under the carpet or under the rear seat. On vehicles manufactured from '03-'05, the TEL-AID module also must be bypassed.
- See step 8 (Installation) for bypassing instructions, see below to verify if this car has a factory phone or not.
- Press the **'TEL'** button on the radio:

#### Factory phone module installed



#### No phone module installed



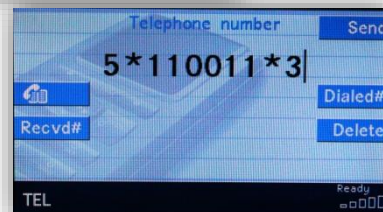
### TOOKI Commands

Press the **'TEL'** button, dial a code and press **'SEND'**

**5\*110011\*1: Version & Date information**

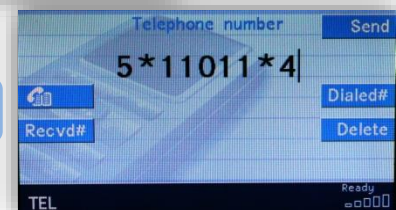


**5\*110011\*3: TOOKI serial number**



**TOOKI Pairing  
code: 6888**

**5\*110011\*4: Parrot Version**



Agreement: End user agrees to use this product in compliance with all State and Federal laws. NAV-TV Corp. would not be held liable for misuse of its product. If you do not agree, please discontinue use immediately and return product to place of purchase. This product is intended for off-road use and passenger entertainment only.